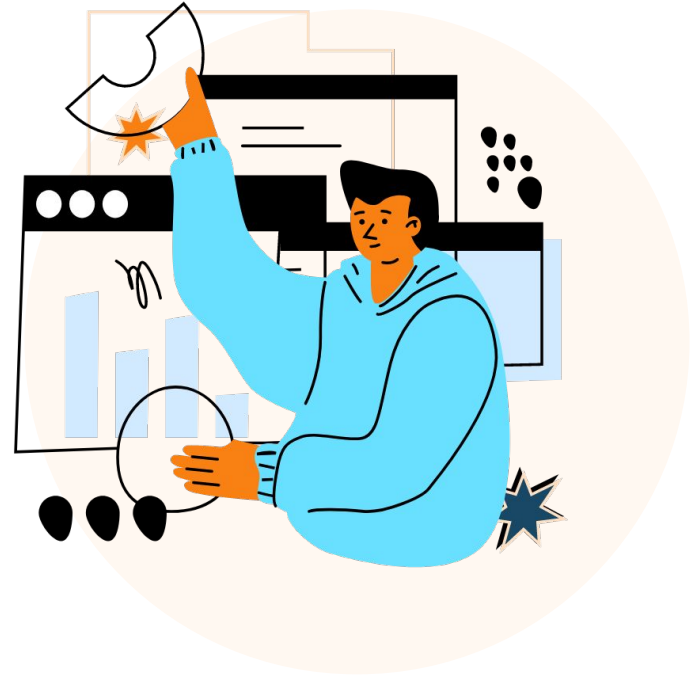




GEC Partner

Digital competencies of literacy
educators Moodle course





Michelle Moore

michelle.moore@moodle.com

Head of Customer Success

Moodle US

Lauren Goodman

lauren.goodman@moodle.com

Learning Designer

Moodle US





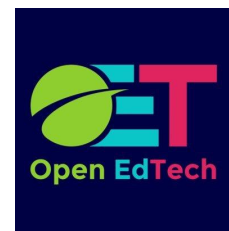
Free and open learning platform
Commitment to open standards
Interoperable by design

LINK: [About Moodle > Standards](#)



Open source platform for educators
to find, share & curate Open
Educational Resources

LINK: [MoodleNet](#)



Education organisations should be
able to **own** their infrastructure, not
just rent it

LINK: [Open Ed Tech](#)

Digital Literacies Course

Design Considerations



**Any Learner
Anywhere**



Remove Barriers



Prioritize Access



Flexible Design

Course Design Features



Uses core
Moodle tools



Asynchronous learner
engagement



Mobile-first
design strategy



Can be completed
offline using
Moodle mobile app



Allows for printing
of course content



Can be translated,
modified, shared



Learn and practice
digital competencies

Course overview

Module 1: Technologies for literacy education

Module 2: Integrating technologies into literacy instruction

Module 3: Technologies for continuous professional development

Portfolio

Overview

Session 1.1

Session 1.2

Session 1.3

Session 1.4

Session 1.5

Session 1.6



1.6 Technology for assessment

Mark as done



Discussion Forum 6: Digital tools in assessment

Mark as done



Portfolio Activity 7: Exploring technology for literacy assessment

Mark as done



End of Module 1 Quiz

Mark as done

Session 1.1



1.1 Introduction to technology in education

Mark as done



Discussion Forum 1: Technologies in the community

Mark as done



Portfolio Activity 1: Informal field research

Mark as done

Session 1.2



1.2 Basic technological devices

Mark as done



Discussion Forum 2: Case Study about mobile phones for learning in Niger

Mark as done



Discussion Forum 1: Technologies in the community

This activity is an **online discussion forum**. You will respond to the questions below here in Moodle, and will reply to your fellow learners' posts. If you are offline and using the Moodle mobile app, you can write your responses and they will synchronise the next time you connect to the internet.

Questions for Discussion

Think about the context of your learners and their communities when you **respond to the following two questions**.

- What types of technologies are used in your learners' everyday life?
- What is the purpose of these technologies?

Participate in this Moodle Discussion Forum by **clicking the "Add a new topic" button**.

Return to Lesson

Once you have completed this activity, return to the [1.1 Introduction to technology in education](#) Lesson.



DATABASE

Portfolio Activities Submission Area

Your Portfolio is a tool that allows you to reflect on your learning, apply skills learned in the modules, and share your ideas with your classmates.

Use the following buttons to **Add An Entry** (submit a new entry to your Portfolio) or **View Portfolios** (your portfolio entries and those of your classmates).

[Add An Entry](#) [View Portfolios](#)



No entries in database



**Empowering
educators to
improve our
world**





Michelle Moore

michelle.moore@moodle.com

Head of Customer Success

Moodle US

Lauren Goodman

lauren.goodman@moodle.com

Learning Designer

Moodle US