



# AI for Adult education support: Where to begin?

---

**Prof. Ahmed Tlili**  
**Smart Learning Institute**  
**Beijing Normal Education**

# What is Adult education?

---

- Adult education is a practice in which adults engage in **systematic and sustained self-educating activities** in order to gain new forms of knowledge, skills, attitudes, or values.
- According to **UNESCO Recommendation on Adult Learning and Education (2015)**, adult education denotes the entire body of learning processes, formal, non-formal and informal. This helps to ensure that all adults participate in their societies and the world of work.
- The **2030 Agenda for Sustainable Development (2015)** has numerous targets on adult education, and to which all states have committed.

# Challenges of Adult education

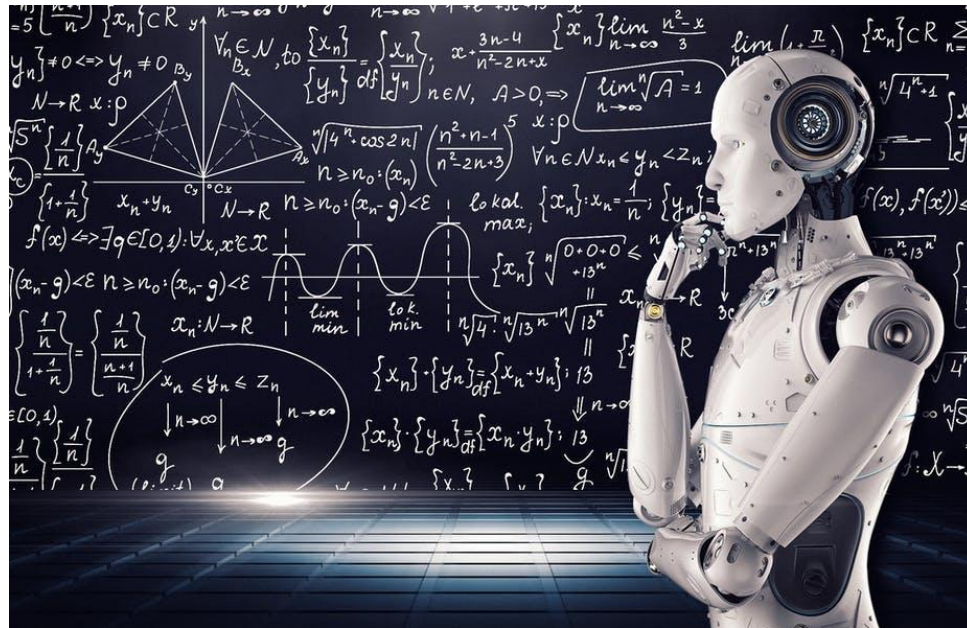
---

- 1. Time management:** Balancing professional and family commitments with the educational obligations can be very difficult considering the packed life schedule.
- 2. Mindset and Cognitive Ability:** As you age, your mind is continuously losing cognitive abilities and becoming slower at processing and storing new information.
- 3. Financial Barriers:** Financial barriers are very important for anybody who doesn't have a chance at getting a scholarship. These barriers become the primary reason why most people don't get a degree or pursue their education.

# What is Artificial Intelligence

---

Artificial intelligence (AI) is a wide-ranging branch of computer science concerned with building smart machines capable of performing tasks that typically require human intelligence.



# How AI can support Adult learning

---

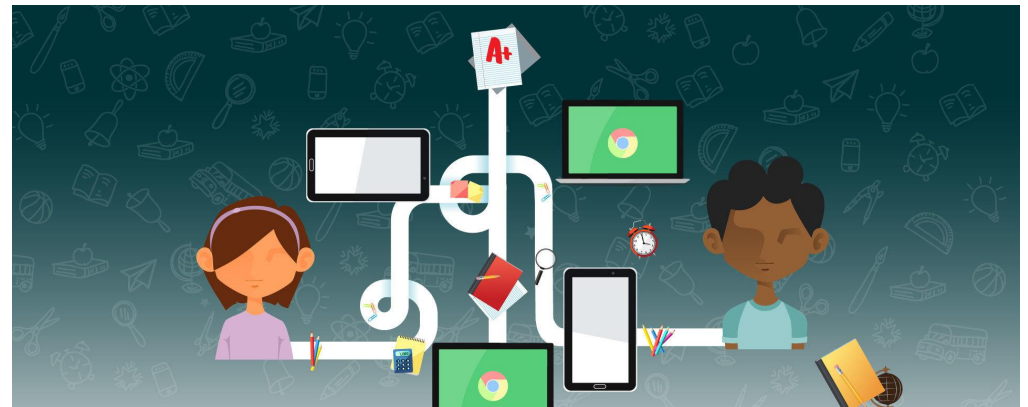
- 1. Learning support:** AI can provide immediate support for Adults to facilitate the learning process whenever it is needed, even if teachers are not present. For instance, Intelligent Tutoring Systems (ITSs) can provide real-time and personalized feedback and hints , through chatbots and computer-based agents, to adults. This can help them easily different concepts or curriculums, hence achieve better learning outcomes.



# How AI can support Adult learning

---

- 2. Personalized learning:** AI can learn about how adults are performing in a given learning process, and then provide personalized learning matching their backgrounds accordingly. For instance, when an adult is not performing well in mathematics, the learning system will automatically try to provide more adequate learning content that matches the adult's level of knowledge on mathematics. This can motivate adults to continue learning and stay engaged, hence achieve better learning performance.





# What to keep in mind?

---

- 1. Learning about AI before using AI:** Are there courses and tools for adults to understand AI and learn about it before using it?
- 2. Embracing AI to use AI:** Do adults have the required competencies to embrace emerging technologies like AI?
- 3. Life after AI:** Do adults know the societal impact of AI including the ethical concerns, bias, etc.



---

**Thank you for your attention**

